



O.P. Jindal Global University
A Private University Promoting Public Service



Jindal Global Law School
India's First Global Law School



Jindal School of Government
and Public Policy
India's First Public Policy School



INTERNATIONAL SYMPOSIUM ON LEGAL EMPOWERMENT OF THE POOR

CALL FOR PAPERS
& PARTICIPATION



25th & 26th of
October 2024

Contact Information:
pphadkule@jgu.edu.in,
sonal.hundlani@jgu.edu.in

THEMES

- *Sustainable Livelihoods*
- *Access to Justice and Rule of Law*
- *Inclusive property rights*
- *Labor Rights*
- *Business Rights*

Sub themes

Attainment of legal empowerment, role of judges/ activists/ students in legal empowerment, community mobilisation, need to expand the definition of legal person, necessity to promote inclusive financial services, role of politics in legal empowerment, role of 'identity' & 'voice' in empowerment, and legal & policy reform necessary for bringing the imperative change.

Category of Submissions

- **Article** - 8,000 and 10,000 words.
- **Short Essay** - 5,000 and 6,000 words
- **Case Study/ field notes** (relating to legal empowerment work) - 2,000 and 3,000 words.
- **Photo Essay/ Reviews of books** - 1,500 and 2,500 words.

Important Dates

- Deadline for submission of Abstract: 30th of May 2024
[acceptance of abstracts will be notified by 25th of June, 2024]
- Deadline for full paper: 25th of August 2024
- Symposium: 25th & 26th of October 2024
- **How to submit**: Email to clep@jgu.edu.in

Format for submission

- Times New Roman, 12-point, and double-line spaced.
- Use margins of at least 2.5 cm (or 1 inch).
- OSCOLA style of referencing
- Selected manuscripts will be published in **Jindal Global Law Review**, subject to the successful outcome of the peer reviewing process.

Who is it for

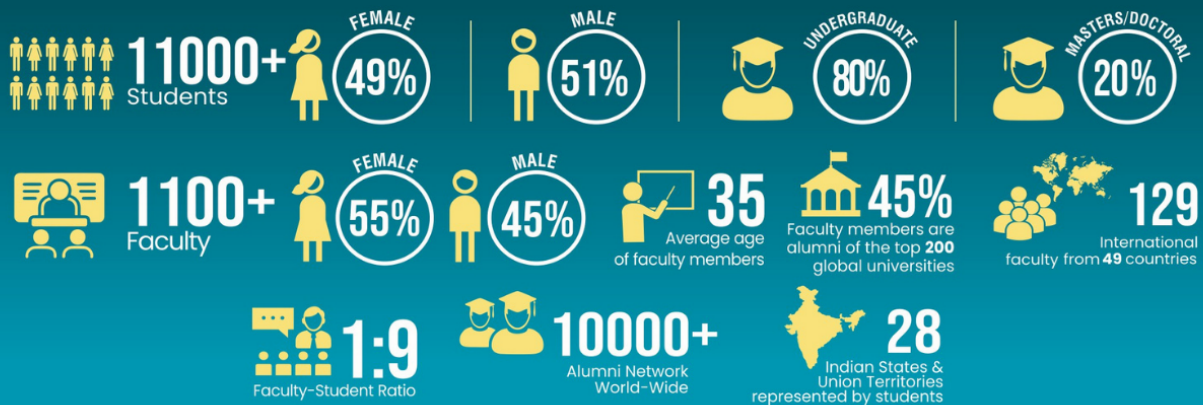
Students, academicians, researchers, policy professionals, NGOs, and anyone interested in contributing to the scholarship of legal empowerment of the poor.

Chairs: Prof. (Dr.) Naresh Singh & Prof. Ajay Pandey

Co-chairs: Pratik Phadkule & Sonal Hundlani

Accommodation: Limited accommodation on first come first serve basis.

JGU @ A GLANCE



12 SCHOOLS



45+ Programmes

30+ Undergraduate Programmes
 15+ Postgraduate Programmes
 1 Doctoral Programme



Jindal Global Law School
 India's First Global Law School



JINDAL GLOBAL BUSINESS SCHOOL
 India's First International Business School



Jindal School of International Affairs
 India's First Global Policy School



Jindal School of Government and Public Policy
 India's First Public Policy School



Jindal School of Liberal Arts & Humanities
 India's First Transnational Humanities School



Jindal School of Journalism & Communication
 India's First Global Media School



JINDAL SCHOOL OF ART & ARCHITECTURE
 India's First International School of Art & Architecture



JINDAL SCHOOL OF BANKING & FINANCE
 India's First Global Finance School



JINDAL SCHOOL OF ENVIRONMENT & SUSTAINABILITY
 India's First Global Sustainability School



Jindal School of Psychology & Counselling
 India's First Interdisciplinary Psychology School



JINDAL SCHOOL OF LANGUAGES & LITERATURE
 India's Global School of Languages of International Studies



JINDAL SCHOOL OF PUBLIC HEALTH & HUMAN DEVELOPMENT
 India's First Global School of Public Health & Human Development

RESEARCH



5500+ Publications



60+ Interdisciplinary research centres

4 Research & capacity building institutes



JILDEE
 JINDAL INSTITUTE OF LEADERSHIP DEVELOPMENT AND EXECUTIVE EDUCATION



JINDAL INSTITUTE OF BEHAVIORAL SCIENCES



INTERNATIONAL INSTITUTE FOR GENDER STUDIES
 IIGS
 O.P. JINDAL GLOBAL UNIVERSITY



Jindal India Institute for Governance & Public Policy
 JIIIPP
 O.P. JINDAL GLOBAL UNIVERSITY

INTERNATIONAL COLLABORATIONS



430+ Collaborations with International Universities & Higher Education Institutions



10 Forms of Global Partnerships



75+ Countries & Regions



200+ Faculty & Student exchange collaborations



70+ Countries represented by students

ACCREDITATION & RANKINGS



Granted Autonomy by University Grants Commission



Ranked 2nd Swachh Campus Ranking 2019 Government of India



QS WORLD UNIVERSITY RANKINGS 2023



QS WORLD UNIVERSITY RANKINGS 2023 BY SUBJECT

CONFERRED THE STATUS OF AN INSTITUTION OF EMINENCE BY THE MINISTRY OF EDUCATION GOVERNMENT OF INDIA



O.P. JINDAL GLOBAL UNIVERSITY
 INSTITUTION OF EMINENCE DEEMED TO BE UNIVERSITY
 A Private University Promoting Public Service

www.jgu.edu.in



📍 Sonapat-131001, (NCR of Delhi)

JGU - An Initiative of Jindal Steel & Power Foundation